



Installation Process

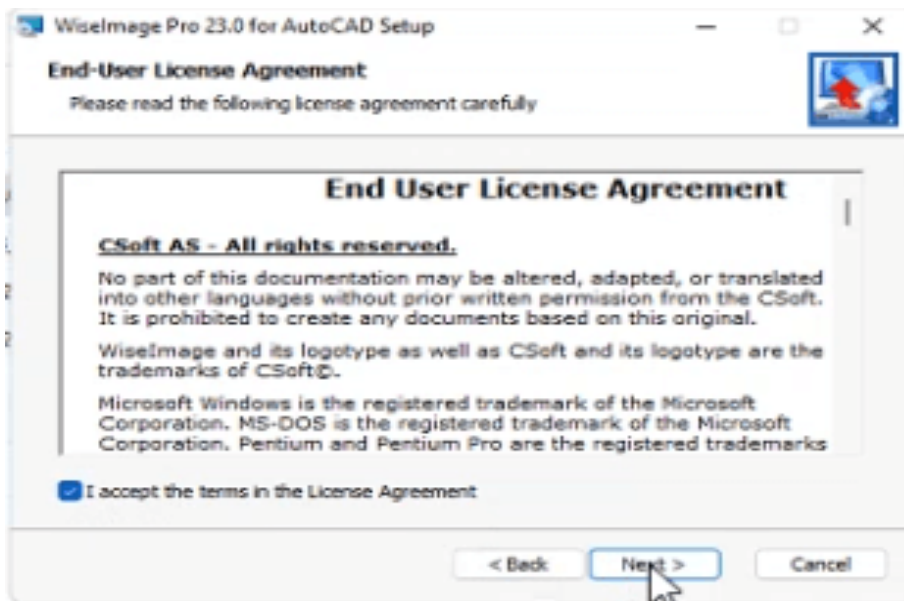
Installation step 1:

Download WiseImage 23 for AutoCAD (From FTP, Website or Email) and double click the .exe file.



Installation step 2:

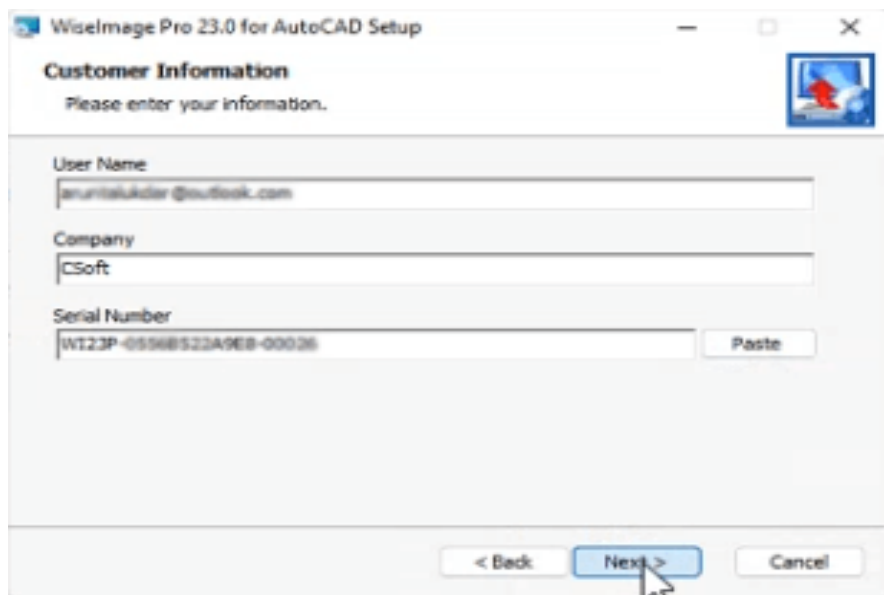
Read the end-user license agreement and after accepting click next.



Installation step 3:

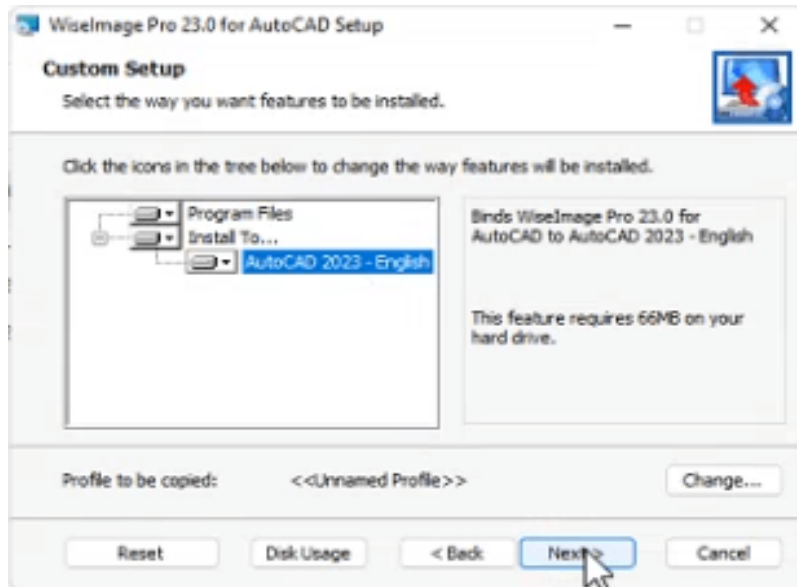


Enter your name into the User Name box accepting click next.
Enter the Serial Number or copy and paste it which is provided to you



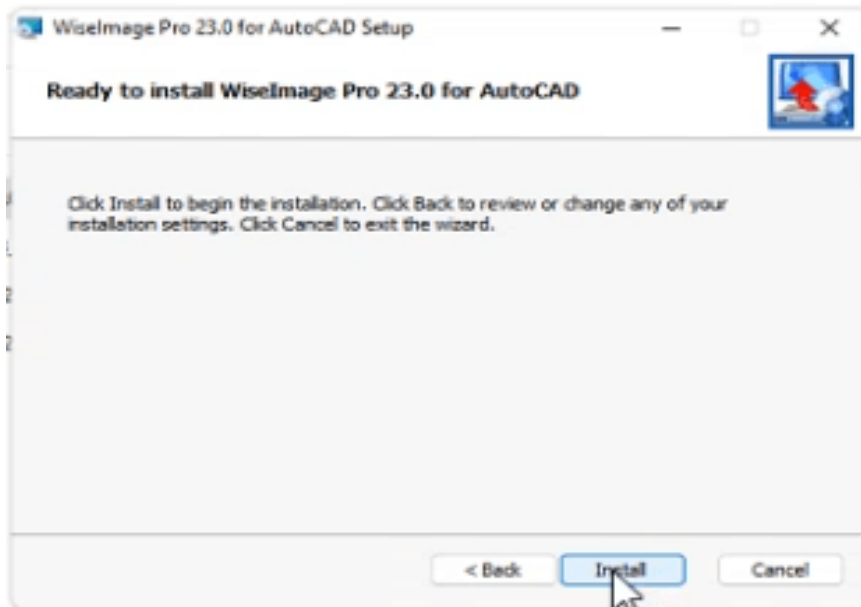
Installation step 4:

Choose the AutoCAD installed in your system, that you want to associate WiselImage with.



Installation step 5:

Press Install.



Installation step 6:

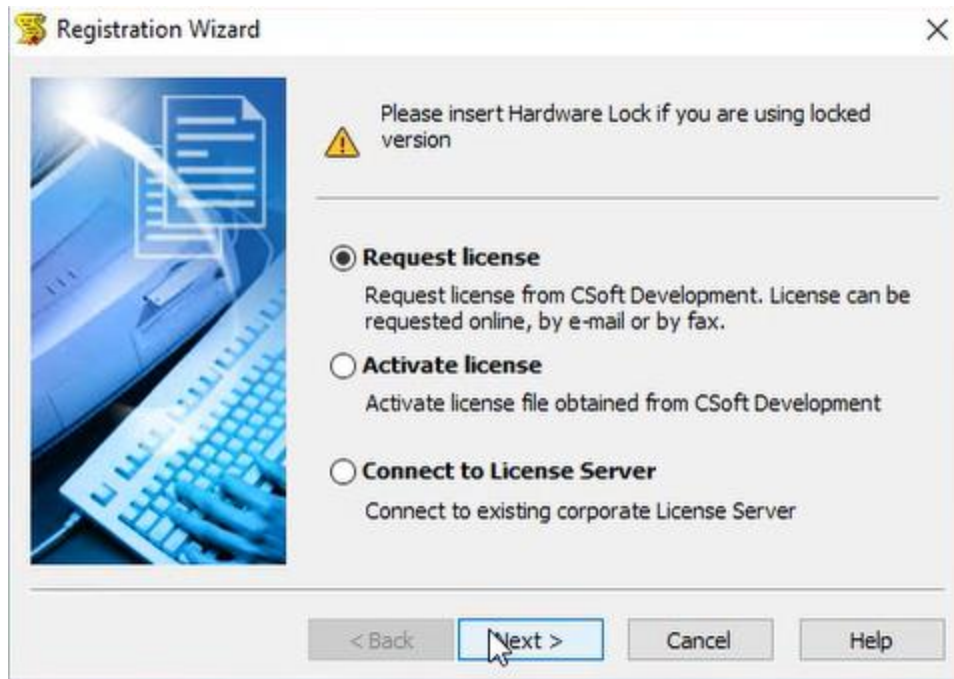
Press Finish and Registration wizard will come up.



Registration Process

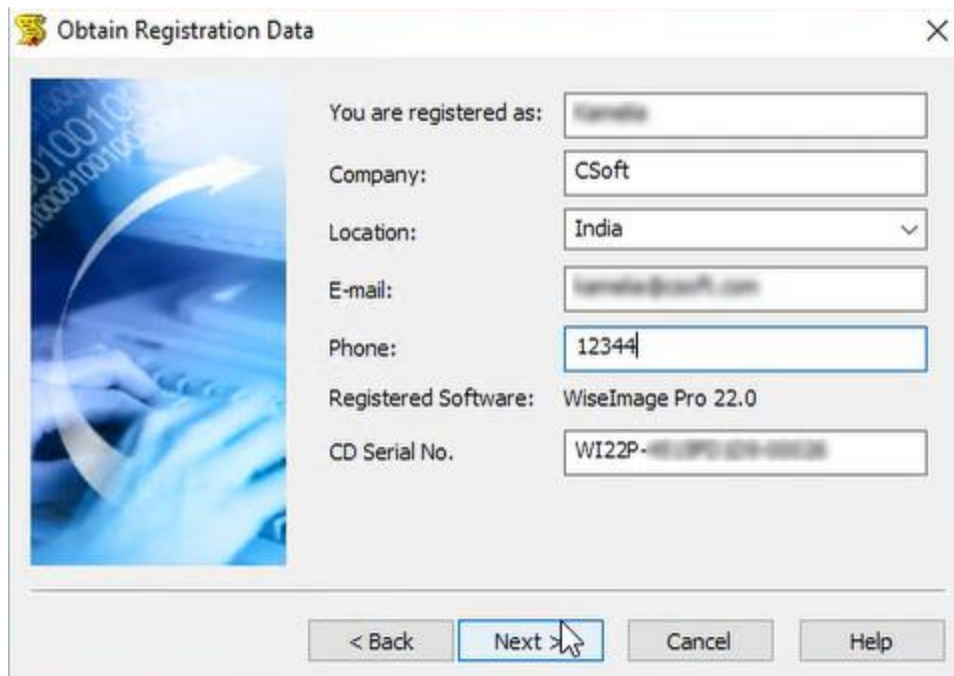
Registration step 1:

The Registration Wizard will guide you. To request a license online, select Request license and click the Next button to continue.



Registration step 2:

Fill up the dialog window with proper information. Click the Next button to continue.



Registration step 3:

Check the registration data and click Back to rectify any mistake, click Next to continue, if everything is ok.



Registration step 4:

Choose "Request license online" option. Then click next to continue.



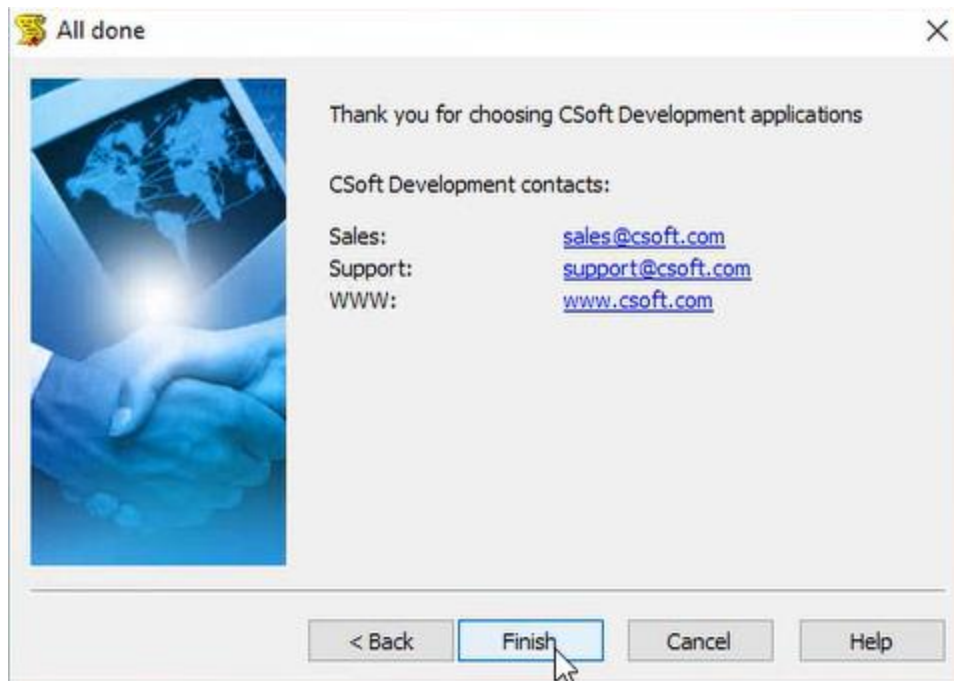
Registration step 5:

The Response Licensing Service dialogue window displays information about your license location. Click the Next button to continue.



Registration step 6:

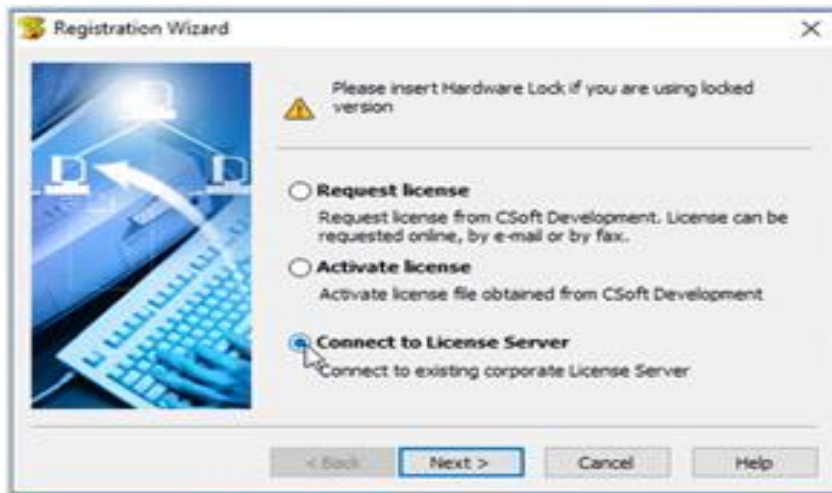
You have been granted a license, the validity of which will be as per your request/purchase for WiselImage 22 for AutoCAD. Click the Finish button to finish registration process.



Process to activate network license:

Step 1:

To request a network license, select Connect to License server and click the Next button to continue.



Step 2:

Specify License Server name or IP address. click the Next button to continue.



Step 3:

RegWizard dialog box will be open. Click next to continue.



Step 4:

Click finish button and your network license will be activated.

